

**MDH2 Antibody (Center)**  
**Purified Rabbit Polyclonal Antibody (Pab)**  
**Catalog # AW5150****Specification**

---

**MDH2 Antibody (Center) - Product Information**

Application	IHC-P, FC, WB,E
Primary Accession	<a href="#">P40926</a>
Other Accession	<a href="#">P04636</a> , <a href="#">P00346</a> , <a href="#">P08249</a> , <a href="#">Q4R568</a> , <a href="#">O02640</a> , <a href="#">Q32LG3</a> , <a href="#">P22133</a>
Reactivity	Human, Mouse
Predicted	Yeast, Bovine, C.Elegans, Monkey, Pig, Rat
Host	Rabbit
Clonality	Polyclonal
Calculated MW	H=36;M=36;Rat=36 KDa
Isotype	Rabbit IgG
Antigen Source	HUMAN

**MDH2 Antibody (Center) - Additional Information****Gene ID** 4191**Antigen Region**  
86-115**Other Names**  
MDH2; Malate dehydrogenase, mitochondrial**Dilution**  
IHC-P~~1:10~50  
FC~~1:10~50  
WB~~1:1000**Target/Specificity**  
This MDH2 antibody is generated from rabbits immunized with a KLH conjugated synthetic peptide between 86-115 amino acids from the Central region of human MDH2.**Format**  
Purified polyclonal antibody supplied in PBS with 0.09% (W/V) sodium azide. This antibody is prepared by Saturated Ammonium Sulfate (SAS) precipitation followed by dialysis against PBS.**Storage**  
Maintain refrigerated at 2-8°C for up to 2 weeks. For long term storage store at -20°C in small aliquots to prevent freeze-thaw cycles.**Precautions**  
MDH2 Antibody (Center) is for research use only and not for use in diagnostic or therapeutic procedures.

## MDH2 Antibody (Center) - Protein Information

**Name** MDH2

**Cellular Location**

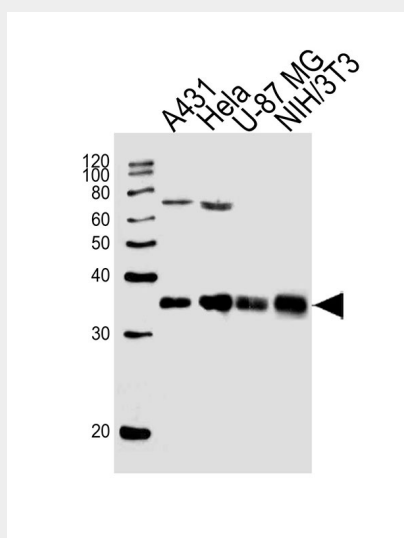
Mitochondrion matrix {ECO:0000250|UniProtKB:P04636}

## MDH2 Antibody (Center) - Protocols

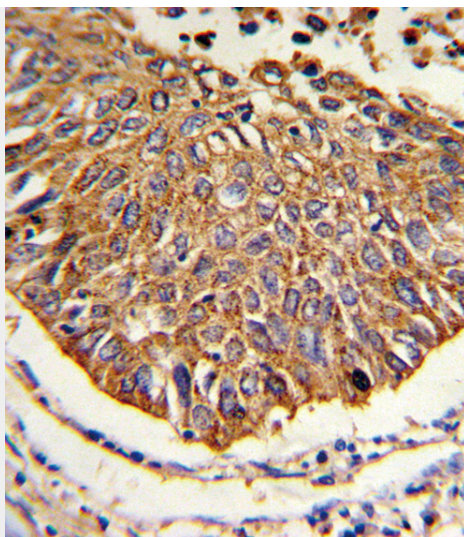
Provided below are standard protocols that you may find useful for product applications.

- [Western Blot](#)
- [Blocking Peptides](#)
- [Dot Blot](#)
- [Immunohistochemistry](#)
- [Immunofluorescence](#)
- [Immunoprecipitation](#)
- [Flow Cytometry](#)
- [Cell Culture](#)

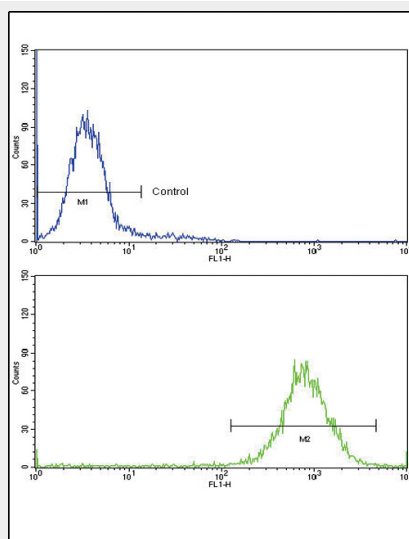
## MDH2 Antibody (Center) - Images



Western blot analysis of lysates from A431, HeLa, U-87 MG, NIH/3T3 cell line (from left to right), using MDH2 Antibody (Center) (Cat. #AW5150). AW5150 was diluted at 1:1000 at each lane. A goat anti-rabbit IgG H&L (HRP) at 1:10000 dilution was used as the secondary antibody. Lysates at 20 µg per lane.



Formalin-fixed and paraffin-embedded human lung carcinoma reacted with MDH2 Antibody (Center), which was peroxidase-conjugated to the secondary antibody, followed by DAB staining. This data demonstrates the use of this antibody for immunohistochemistry; clinical relevance has not been evaluated.



Flow cytometric analysis of K562 cells using MDH2 Antibody (Center)(bottom histogram) compared to a negative control cell (top histogram) FITC-conjugated goat-anti-rabbit secondary antibodies were used for the analysis.

### **MDH2 Antibody (Center) - Background**

MDH2 is localized to the mitochondria and may play pivotal roles in the malate-aspartate shuttle that operates in the metabolic coordination between cytosol and mitochondria.

### **MDH2 Antibody (Center) - References**

Rzem, R., et.al., J. Inherit. Metab. Dis. 30 (5), 681-689 (2007)